

# SL SHOP (Sales & Service) Ltd

# Vehicle Health Check

## CUSTOMER DETAIL

Mr Abid Chowdhury  
H  
Tel M  
W

## VEHICLE DETAIL

Make Mercedes  
Model SI/Sec Series  
Registration F327EAX  
Chassis No WDB1070412A085900  
Mileage

## VHC NO

8446

Date 2022-10-06  
Service Advisor Russell Owens  
MOT Due 13/06/2023  
Inspected By m - Nathan Wheeler

Comments / Recommendations		Net	VAT	Total
<b>EXTERIOR</b>				
A	Bodywork	Passenger door is abit wavy and the rear arch seems to have filler in it		
A	Paint	Marks in paint above chrome eyebrows A few marks over the car Seems to be filler in the some archs and possibly the door as it's very wavy(passenger door)		
A	Trim	Numberplate chrome fitted incorrectly Rear bumper needs adjustment  Rear bumper rubber isn't fitted correctly Sills chromes are dented Rear quater moulding appear to be stuck on and broken Front bumper chrome bubbling Front bumper rubbers have marks on themGrill rubber incorrectly fitted		
G	Glass			
A	Chrome	Marks on various chromes around the car		
A	Underbody	Arch liners fitted incorrectly Evap tank pipe split Surface corrosion in various places under the car would advise clean down treat and wax oil  Both front wheel bearings require adjustment		
R	N/s/r wheel bearing	Excessive play mot fail		
<b>INTERIOR</b>				
A	Door cards	Drivers inner handle is loose		
A	Seats	Some seat chromes are loose or damaged Bolster has slight damage		
A	Dash	Hole in the roof Handle cover missing Marks in the dash		
G	Carpets			
G	Boot carpet			
A	Boot			
A	Engine bay	No lower bonnet insulation Remains of an old alarm still in engine bay disconnected Bulkhead has previously been treated and a stud is snapped would advise wax oil to preserve		
<b>ENGINE</b>				
R	Appearance	Quite a big leak suspected to be front timing seal Powersteering pump is misted with oil Possible front crank seal leaking due to the amount of oil around the auxiliaries on the engine		
G	Starting			
R	Running	Quite tappety when running Slightly lumpy Low idle Hunts		
A	Road test	Steering has play and isn't central pulls slightly to the left Scuttle shake from the subframe bushesWipers smear washers are partially blocked		
A	Water test	Window seals leak		
<b>TRANSMISSION</b>				
G	Gear change			
A	Propshaft/Driveshafts	Rear prop coupling is cracking		
R	Leaks	Leaks from rear main or rear of sumpMultiple leaks from the gear box suspect kickdown o ring,dipstick o ring, sump gasket and from the inhibitor selector rod seal		
<b>RUNNING GEAR</b>				
A	Axles	Diff is leaking from end llate and possibly leaking from driveshaft seals but require clean down to investigate Driveshafts have corrosion advise clean down and paint All springs are corroded advise clean down paint and wax oil		
A	Suspension	Subframe bushes are perished Engine mounts are perished Anti roll bar bushes are perished o/s rear damper has been leaking		
R	Brakes	All brakes hoses are cracking would advise replacing		
A	Wheels and Tyres	Slight curbing to wheels Wheels have different wheel bolts		
<b>ELECTRICS</b>				

# SL SHOP (Sales & Service) Ltd

# Vehicle Health Check

## CUSTOMER DETAIL

Mr Abid Chowdhury  
H  
Tel M  
W

## VEHICLE DETAIL

Make Mercedes  
Model SI/Sec Series  
Registration F327EAX  
Chassis No WDB1070412A085900  
Mileage

## VHC NO

8446

Date 2022-10-06  
Service Advisor Russell Owens  
MOT Due 13/06/2023  
Inspected By m - Nathan Wheeler

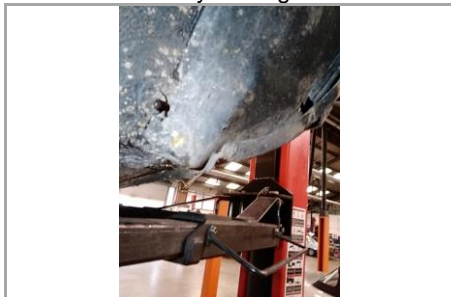
Comments / Recommendations		Net	VAT	Total
G	Lights - Exterior			
G	Lights - Interior			
A	Light on dash Bulb warning light on when starting the car with no lights on suspected light control module fault			
<b>VEHICLE HISTORY</b>				
N/A	.			
<b>OVERALL GRADE</b>				
N/A	.			
<b>Total</b>		0.00	0.00	0.00

Tyres	Tread (mm)	Manufacturer	Size	Comments/Recommendations
G N/S Front	7.2			
G N/S Rear	7.1			
G O/S Front	7.0			
G O/S Rear	7.1			
G Spare	3.5			

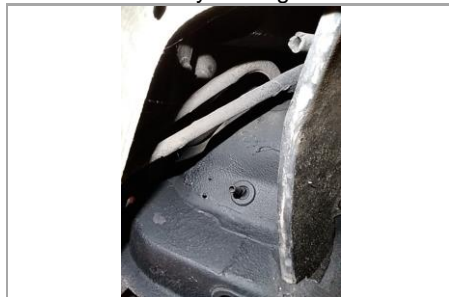
Brakes	Drums	Pads	Discs	Comments/Recommendations
		mm Remaining	mm Remaining	
N/S Front	N	G 90	G 90	
N/S Rear	N	G 90	G 90	
O/S Front	N	G 90	G 90	
O/S Rear	N	G 90	G 90	

## Photos

Underbody - Image 1 of 3



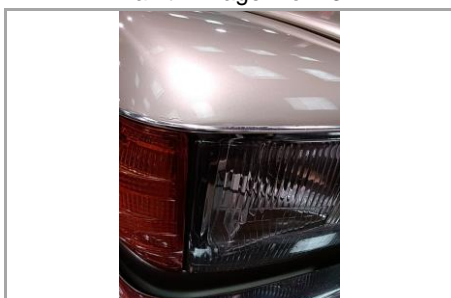
Underbody - Image 2 of 3



Underbody - Image 3 of 3



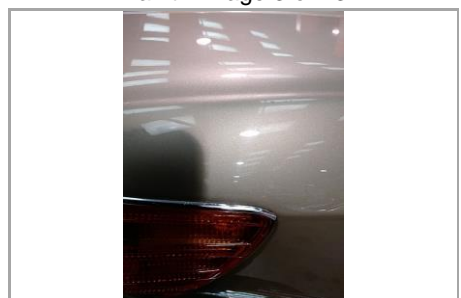
Paint - Image 1 of 13



Paint - Image 2 of 13



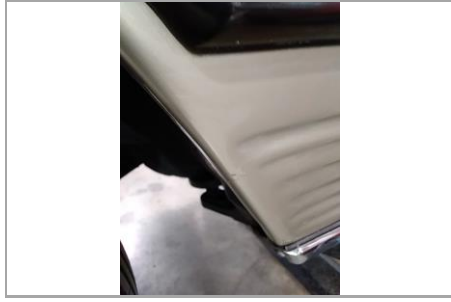
Paint - Image 3 of 13



Paint - Image 4 of 13



Paint - Image 5 of 13



Paint - Image 6 of 13



Paint - Image 7 of 13



Paint - Image 8 of 13



Paint - Image 9 of 13



Paint - Image 10 of 13



Paint - Image 11 of 13



Paint - Image 12 of 13



Paint - Image 13 of 13



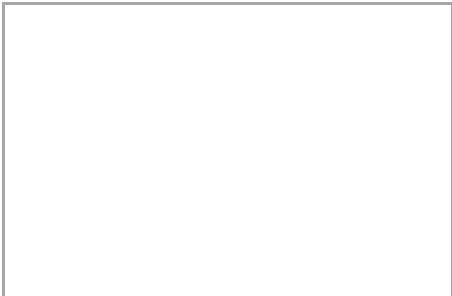
Trim - Image 1 of 11



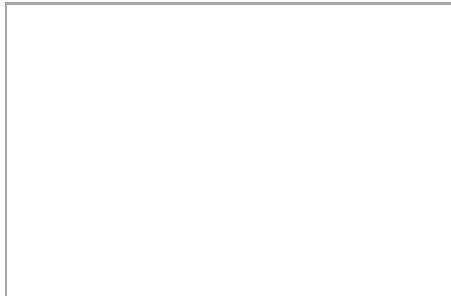
Trim - Image 2 of 11



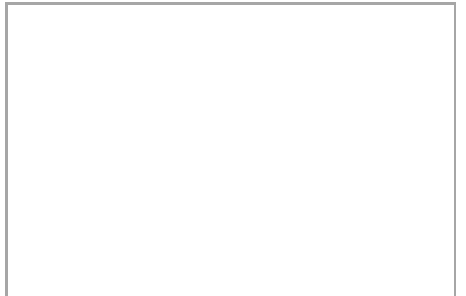
Trim - Image 3 of 11



Trim - Image 4 of 11



Trim - Image 5 of 11



Trim - Image 6 of 11



Trim - Image 7 of 11



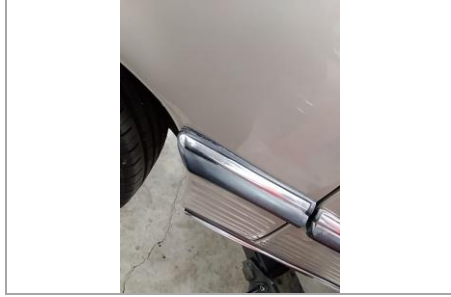
Trim - Image 8 of 11



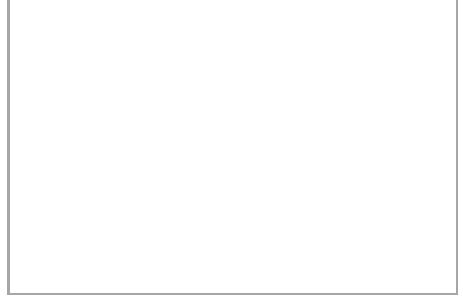
Trim - Image 9 of 11



Trim - Image 10 of 11



Trim - Image 11 of 11



Chrome - Image 1 of 4



Chrome - Image 2 of 4



Chrome - Image 3 of 4



Chrome - Image 4 of 4



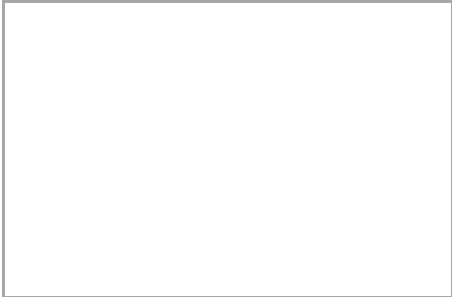
Engine bay - Image 1 of 4



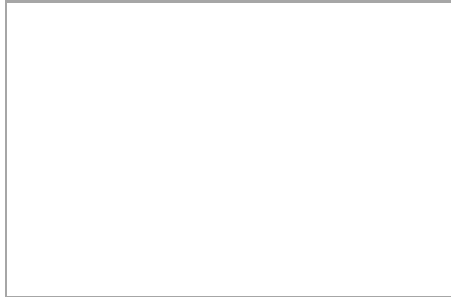
Engine bay - Image 2 of 4



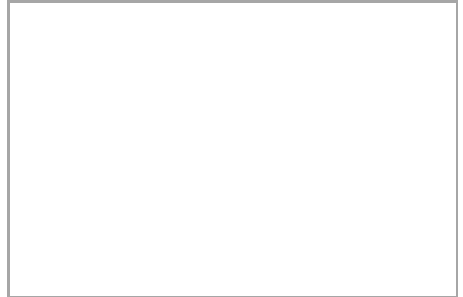
Engine bay - Image 3 of 4



Engine bay - Image 4 of 4



Boot - Image 1 of 2



Boot - Image 2 of 2



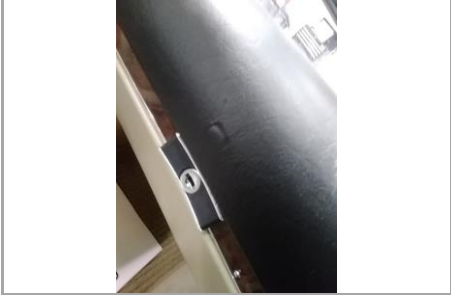
Door cards - Image 1 of 1



Seats - Image 1 of 1



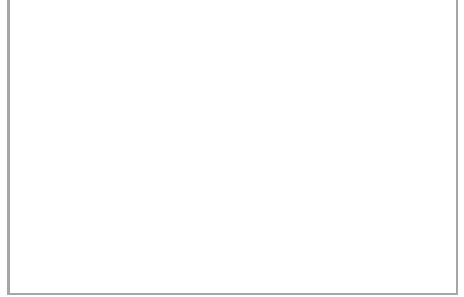
Dash - Image 1 of 4



Dash - Image 2 of 4



Dash - Image 3 of 4



Dash - Image 4 of 4



Appearance - Image 1 of 2



Appearance - Image 2 of 2



Leaks - Image 1 of 5



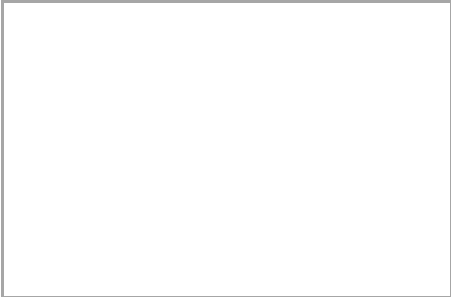
Leaks - Image 2 of 5



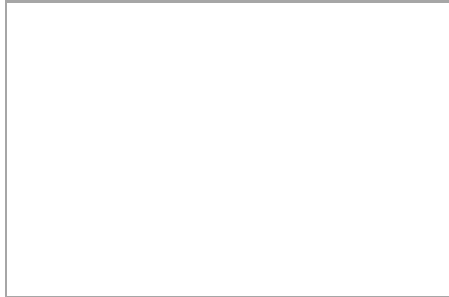
Leaks - Image 3 of 5



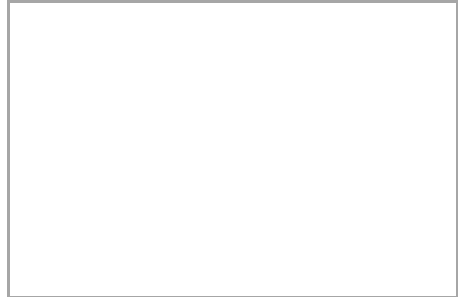
Leaks - Image 4 of 5



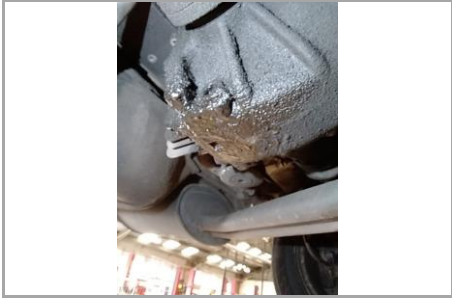
Leaks - Image 5 of 5



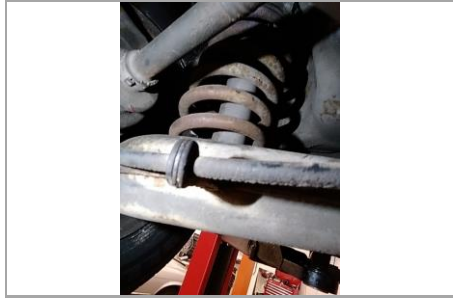
Propshaft/Driveshafts - Image 1 of 1



Axles - Image 1 of 4



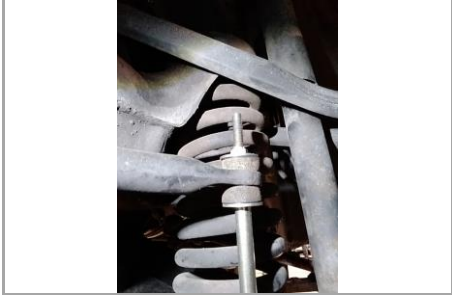
Axles - Image 2 of 4



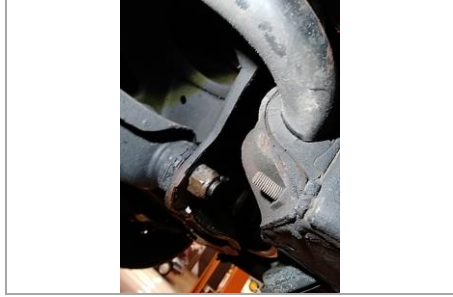
Axles - Image 3 of 4



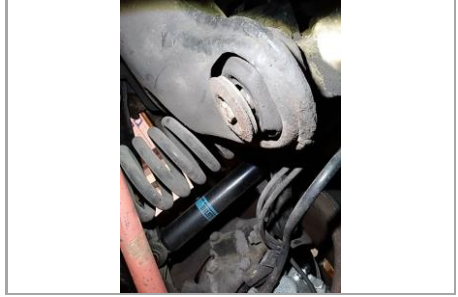
Axles - Image 4 of 4



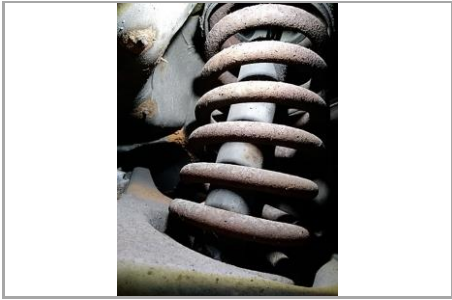
Suspension - Image 1 of 3



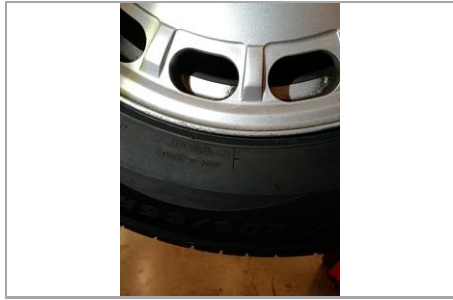
Suspension - Image 2 of 3



Suspension - Image 3 of 3



Wheels and Tyres - Image 1 of 4



Wheels and Tyres - Image 2 of 4



Wheels and Tyres - Image 3 of 4



Wheels and Tyres - Image 4 of 4



Light on dash - Image 1 of 1



**Customer Signature** \_\_\_\_\_ The work outlined in this report has been brought to my attention

This report and any costs shown are the result of a visual inspection only. Further checks may be necessary to determine the full extent of any requirements. Estimate valid for 30 days from inspection.