

# SL SHOP (Sales & Service) Ltd

# Vehicle Health Check

## CUSTOMER DETAIL

Mr Charles Janeway  
H  
Tel M 07535 521 931  
W

## VEHICLE DETAIL

Make Mercedes-Benz  
Model SL Class  
Registration JAZ8187  
Chassis No WDB1070472A061109  
Mileage 135480

## VHC NO

8170

Date 2022-09-02  
Service Advisor  
MOT Due 02/03/2022  
Inspected By m - Luke Palmer

Comments / Recommendations		Net	VAT	Total	
<b>Initial Road Test 00IRT</b>					
A	Engine performance / smoke / noises	Engine idles very lumpy and belts squeak when driving			
A	Brake performance / spongy / pulling left or right	Brake pedal feels very hard like a possible seized caliper			
A	Steering in straight position / feel / noises	Steering wheel off centre and there's play in the steering box			
A	Check operation of warning lights 54585	Washer light inop			
G	Check operation of wipers and washers 86000				
G	Check operation of horn 54105				
G	Check operation of parking brake 42120				
<b>lights 82000</b>					
R	Check operation of front external lights 82195	NS fog light inop			
R	Check operation of rear external lights 82225	OS side light inop			
<b>Interior 91000</b>					
G	Check seat and seat belt operation 91090				
R	Check interior lights 82165	Header rail lights inop and passenger light is hanging off			
G	Heater motor operation 83135				
R	Radio and aerial operation 82345	Radio and aerial works but doesn't pick up any stations			
<b>Engine Bay 18000</b>					
G	Antifreeze strength 50000	Up to -23c			
R	Remove heater box lid-check bulkhead 62015	Bulkhead has been previously poorly repaired with seam sealer and riveted plates ontop			
G	Check battery condition 54080				
G	Check charging Volts 15030	13.7 volts			
G	Check G/Box oil level 18000				
G	Check engine oil level / condition 18000				
G	Check for fuel leaks 07075				
A	Check brake fluid level / condition 42000	Boiling point is 165 minimum is 155			
<b>Under Vehicle 00UV</b>					
A	Check drop links 32060	Front anti roll bar bushes extremely perished but no knocking			
R	Check front wishbones 33030	Passenger wishbone is heavily corroded resulting in 2 holes			
G	Check shock absorbers 32000				
G	Check engine mountings 22010				
G	Check subframe bushes 33010				
R	Check for general oil leaks 18000	Possibly sump leaking. Rear main seal leaking. Gearbox leaking			
G	Check propshaft couplings condition 41015				

# SL SHOP (Sales & Service) Ltd

# Vehicle Health Check

## CUSTOMER DETAIL

Mr Charles Janeway  
H  
Tel M 07535 521 931  
W

## VEHICLE DETAIL

Make Mercedes-Benz  
Model SL Class  
Registration JAZ8187  
Chassis No WDB1070472A061109  
Mileage 135480

## VHC NO

8170

Date 2022-09-02  
Service Advisor  
MOT Due 02/03/2022  
Inspected By m - Luke Palmer

Comments / Recommendations		Net	VAT	Total	
<b>R</b>	Check fuel pump pipes/filter package 47045	Main fuel line extremely corroded and may leak soon. All rubber hoses are perished and rock hard.			
<b>A</b>	Check exhaust system condition 14060	Backbox heavily corroded and blowing slightly.			
<b>A</b>	General underbody corrosion / Waxoyl 61000	Heavy corrosion present inside OS chassis leg underneath where the ABS pump is. Heavy corrosion present inside NS chassis leg. Corrosion present on drivers chassis rail meets chassis leg. Corrosion present on both rear arch to boot floor. Corrosion present on rear seat bases.			
<b>A</b>	Visual check on brake pads and discs 42000	Both rear pads are crumbling and discs are corroded. OSR wheel difficult to turn, possibly seized caliper			
<b>G</b>	Check rear drive shafts/boots 35030				
<b>R</b>	Wheel bearings	Both front bearings have play but NS his extremely noisy			
<b>Soft Top Check 77000</b>					
<b>A</b>	Check soft top open/closure/catch mechanism 7700	Release cable needs adjusting. Upper window seals not attached on both sides.			
<b>Water Test 00WT</b>					
<b>R</b>	Check bulkhead for leaks	Bulkhead leaking onto both drivers and passenger foot wells			
<b>R</b>	Check window/door seals for leaks	Both hardtop seals allowing water ingress onto the seats			
<b>G</b>	Check boot/rear lights for leaks				
		<b>Total</b>	0.00	0.00	0.00

Tyres	Tread (mm)	Manufacturer	Size	Comments/Recommendations
<b>G</b> N/S Front	5.5			
<b>G</b> N/S Rear	6.0			
<b>G</b> O/S Front	5.5	5.5		Tyre is extremely perished all over the tyre
<b>G</b> O/S Rear	6.0			
<b>G</b> Spare	4.0			

Brakes	Drums	Pads	Discs	Comments/Recommendations
		% Remaining	% Remaining	
N/S Front	N	<b>G</b> 70	<b>G</b> 50	
N/S Rear	N	<b>A</b> 35	<b>G</b> 50	Brake pads crumbling
O/S Front	N	<b>G</b> 70	<b>G</b> 50	
O/S Rear	N	<b>A</b> 35	<b>G</b> 50	Brake pad crumbling

## Photos

Check interior lights 82165 - Image 1 of



Remove heater box lid-check bulkhead



Remove heater box lid-check bulkhead



Check drop links 32060 - Image 1 of 2



Check drop links 32060 - Image 2 of 2



Check front wishbones 33030 - Image 1 of 2



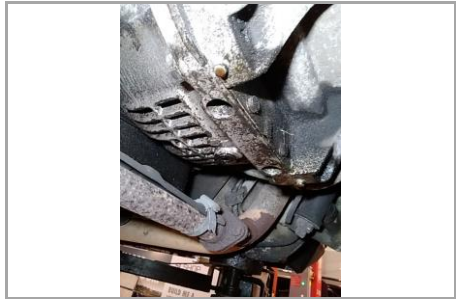
Check front wishbones 33030 - Image 2



Check for general oil leaks 18000 -



Check for general oil leaks 18000 - Image 2 of 3



Check for general oil leaks 18000 - Image 3 of 3



Check fuel pump pipes/filter package 47045 - Image 1 of 2



Check fuel pump pipes/filter package 47045 - Image 2 of 2



Check exhaust system condition 14060 - Image 1 of 2



Check exhaust system condition 14060 - Image 2 of 2



General underbody corrosion / Waxoyl 61000 - Image 1 of 7



General underbody corrosion / Waxoyl 61000 - Image 2 of 7



General underbody corrosion / Waxoyl 61000 - Image 3 of 7



General underbody corrosion / Waxoyl 61000 - Image 4 of 7



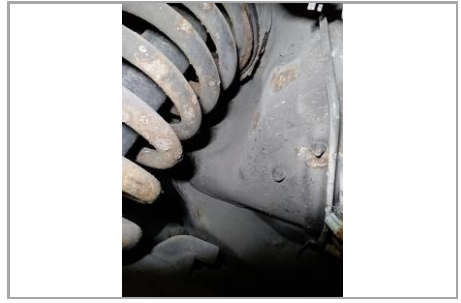
General underbody corrosion / Waxoyl  
61000 - Image 5 of 7



General underbody corrosion / Waxoyl  
61000 - Image 6 of 7



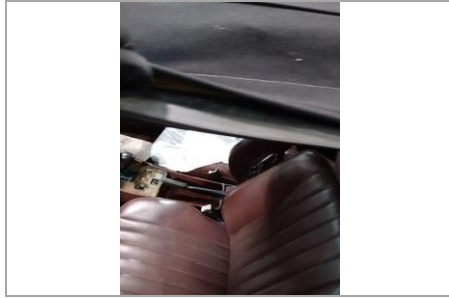
General underbody corrosion / Waxoyl  
61000 - Image 7 of 7



Check soft top open/closure/catch  
mechanism 7700 - Image 1 of 2



Check soft top open/closure/catch  
mechanism 7700 - Image 2 of 2



O/S Front



O/S Front

O/S Front

**Customer Signature** \_\_\_\_\_

The work outlined in this report has been brought to my attention

This report and any costs shown are the result of a visual inspection only. Further checks may be necessary to determine the full extent of any requirements. Estimate valid for 30 days from inspection.